

The warehouse industry is changing. Can your operations keep pace?

76%

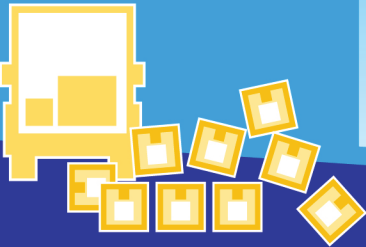
increase
in volume of
items ordered
by 2020 ¹

83%

increase
in items shipped
by 2021 ¹

89%

of executives
agree e-commerce
is driving the need
for faster delivery ²



Legacy mobile devices

Not made for the pace of e-commerce



Outdated Windows® mobile operating systems, developed long before the e-commerce revolution, can't handle today's fulfillment demands and security risks.

Downtime



- Slower task completion
- Less intuitive, green screen push-button devices
- Battery change prompts cold reboot that creates downtime, lost productivity
- Lack of replacement parts leads to retired devices and slower operations

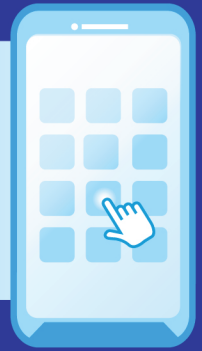
Hamper training efforts



Longer training cycles due to a slow, unfamiliar interface and cumbersome navigation costs valuable time.

Zebra Android devices

Accelerates e-commerce fulfillment



Modern Android operating systems are built for today's on-demand economy and offer up to seven years of security support, making them the best choice for daily operations.

Uptime

- 40% faster data entry and 60% fewer errors with touch screen ³
- Fast charging, hot swap batteries keep devices running
- Readily available replacement parts help maintain business continuity.



Enhance training efforts

Slash training time with a user interface that's already familiar to workers.

