



Take the driver's seat with digital documentation you can use to easily share, collaborate, analyze and present in a courtroom.

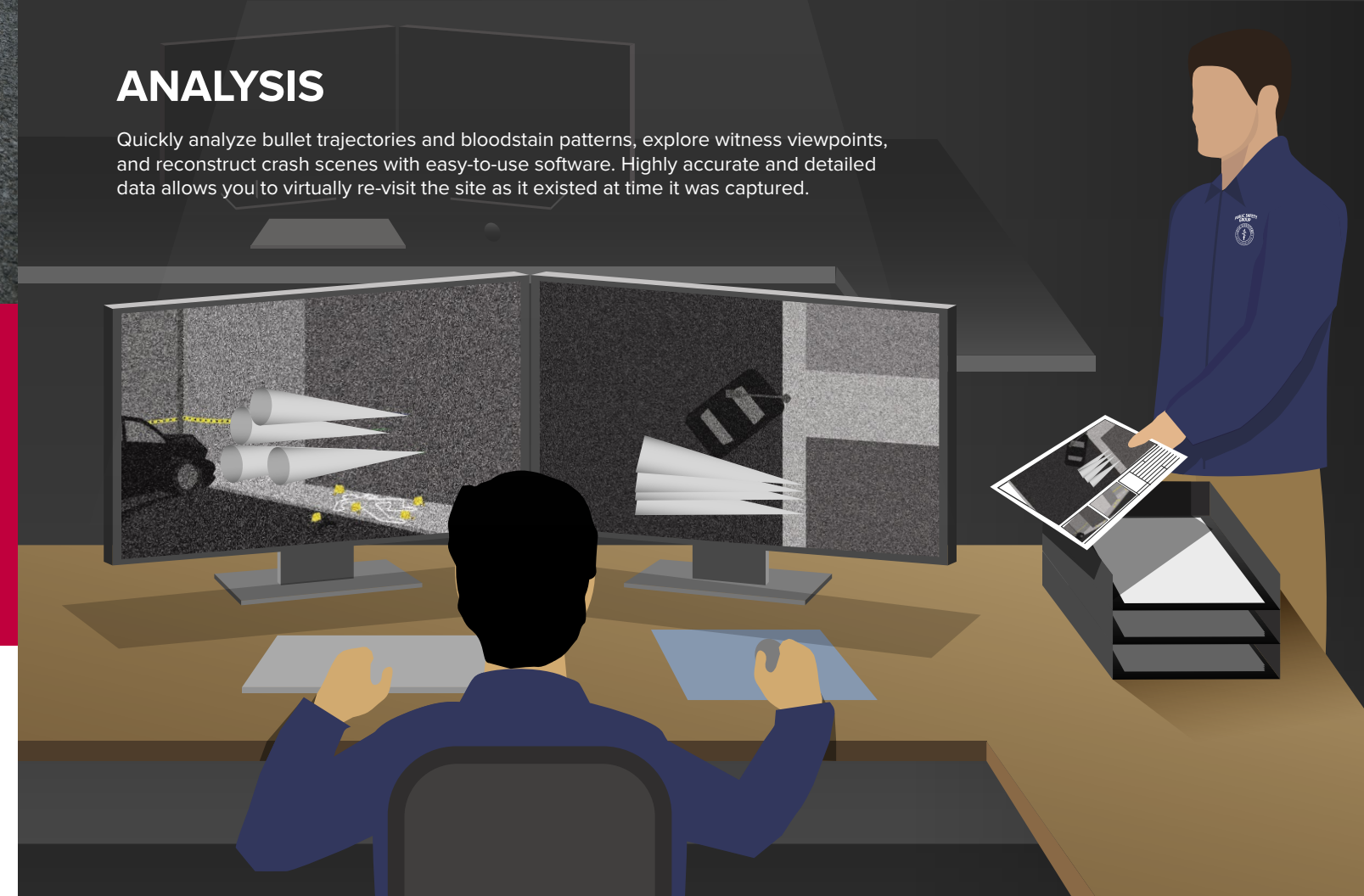
Proven. Reliable. Admissible.



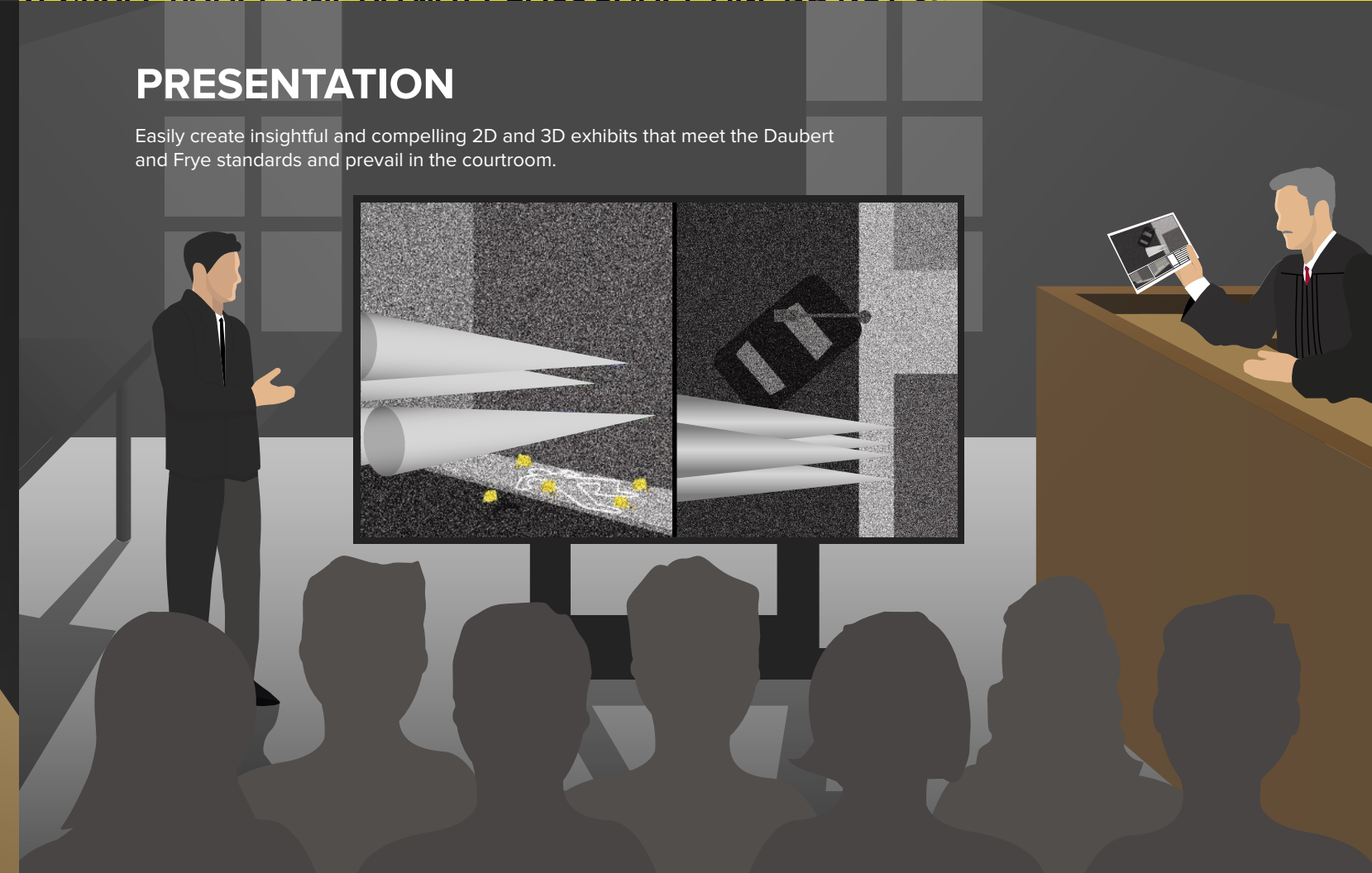
Reduce your time on target while achieving faster scene processing and maintaining industry-leading accuracy. Clear roadways faster, keep communities safer, and stay out of harm's way. Leica Geosystems offers a complete solution for scene mapping that fits any public safety budget.



Quickly analyze bullet trajectories and bloodstain patterns, explore witness viewpoints, and reconstruct crash scenes with easy-to-use software. Highly accurate and detailed data allows you to virtually re-visit the site as it existed at time it was captured.



Easily create insightful and compelling 2D and 3D exhibits that meet the Daubert and Frye standards and prevail in the courtroom.



Whether you're just starting your research or are looking for the latest news and resources, we can help. Discover why so many public safety agencies around the world rely on Leica Geosystems solutions for fast, easy and accurate scene documentation and mapping.



Don't let budget limitations hold you back. Leica Geosystems, together with PoliceGrantsHelp.com, can aid you in locating eligible forensic and homeland security grants and even assist with the grant applications.

Learn more at: <https://www.policegrantshelp.com/Leica-Geosystems-Grant-Assistance/>



If you think you can't finance or lease the technology your agency needs, think again. Many agencies can take advantage of these options and just don't realize it. Through our partnership with GreatAmerica, we can help you identify innovative solutions.



Take advantage of high-quality and comprehensive training specifically tailored to your agency's needs, covering hardware, software and the proven workflows you need to laser scan a scene and extract the exhibits needed to support the mission.

Our training is registered with the IAI for training hours that count toward IAI CSI certification.



We understand that maximizing your resources is key to providing your team with the needed tools. So make your older gear count and trade it up towards the purchase of the gear you need.

“They pled out once the defense attorney saw the Leica TruView.”

— Detective Sgt. James Pissott Jr.
Ocean County Sheriff's Department
Criminal Investigation Unit

Leica Geosystems is part of Hexagon. For more information about public safety solutions, visit psg.leica-geosystems.us.

To learn more about Leica Geosystems products and services, visit www.leica-geosystems.com or call 888-449-6796.

Leica Geosystems Inc.
Norcross, GA
8243873

psg.leica-geosystems.us

- when it has to be **right**



Optimize Your Time on the Scene

Reality Capture

Capture your scene in 3D with the next generation of scene documentation solutions. From terrestrial laser scanners to mobile mapping systems and UAVs, our solutions give you the ability to revisit the scene as often as needed from every angle - giving you new perspectives and irrefutable 3D data sets that help you gain new insights and draw accurate conclusions.



Pro Series

Capture every detail on the scene quickly and safely with the Leica ScanStation PS30, PS40 or PS50. The Pro Series delivers outstanding performance in speed, data quality and range (up to 1000m). Survey-grade accuracy, a rugged design and powerful field-to-finish workflow make this the most robust laser scanner for any public safety task.

RTC360

With the ability to capture a full-dome scan + 5-stop HDR images in under two minutes, the Leica RTC360 is the world's fastest laser scanner. It also lets you geo-tag evidence photos in the field. The scanner is aware of its surroundings and will automatically combine scans into a registered data set in real time so you can share 3D exhibits at the push of a button. Fast, agile and accurate, this is the scanner you have been waiting for.

Pegasus

Map your scenes in 3D in real time as you walk or drive. Wearable and vehicle-mounted mobile mapping solutions are both versatile and accurate, enabling you to easily gather important details. These multisensor 3D mapping systems capture imagery, geolocation and 3D laser measurements for comprehensive scene intelligence.

Aibot SX

Get a bird's-eye view of your scene and generate a compelling 3D photogrammetry model that includes all your measurements. The Leica Aibot SX quickly and automatically maps and measures complex environments from an airborne perspective. This drone/UAV is equipped with a high level of artificial intelligence. It reaches virtually any target and can independently create high resolution images and videos.

BLK360

Scan virtually anywhere with the most tactical laser scanner on the market. At 6.5" x 4" and 2.2 lbs, the Leica BLK360 imaging scanner is small but mighty with a footprint that makes quick work of scene documentation. The scanner produces a 360° photo of your scene as well as a full-dome scan in less than 3 minutes—all at the push of a single button.

MS60

The Leica Nova MS60 MultiStation provides you with the best of both worlds, a 3D laser scanner and a robotic total station. Use the total station functionality for high-accuracy, high-speed scene documentation, and then switch on the scanning capability to capture key parts of your scene as 3D point clouds for virtual exploration later on.

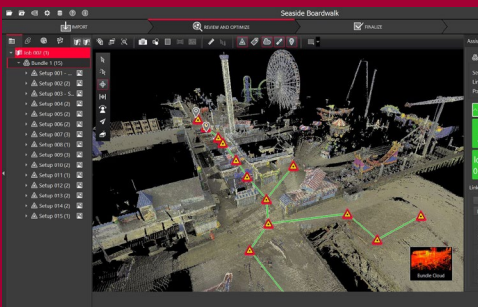
TS13

Quickly and easily get your scene measurements with the Leica TS13 robotic total station. This cost-effective solution can be operated by a single person and integrates easily into your agency's existing workflow.

GS18 T

Stay out of harm's way while getting the precise positioning data you need with the Leica GS18 T, the fastest and easiest-to-use GNSS smart antenna and RTK rover. The on-board IMU sensor allows you to tilt the instrument at any angle during measurement collection without sacrificing accuracy. Simply touch, record and go. Quickly capture data for your scene from the safety of a road barrier or anywhere you can reach with the pole.

Process Your Data Quickly



Cyclone REGISTER 360

Leica Cyclone REGISTER 360 makes working with laser scanning point clouds fast and easy. With one-step import and processing, guided workflows, built-in QA/QC tools and automated reporting, you save considerable time and eliminate guesswork while delivering valuable information quickly.

Batch export your final products to numerous industry-standard formats and push your data to Leica Geosystems' integrated cloud

and enterprise solutions for collaboration with the click of a button. Publish directly into .igs file format for immediate access in TruView, JetStream Viewer, and Map360.

Regardless of your skill level, REGISTER 360 empowers you to work smarter, deliver results more accurately, visualize in more detail and collaborate more effectively.

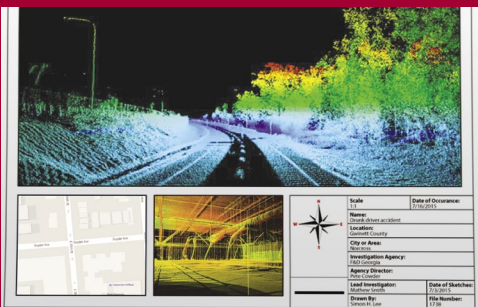


Map360

Easily import, process, analyze, visualize and create court ready deliverables with Map360. While incredibly powerful, this incident mapping software is also incredibly easy to use.

Flexibility and multi-sensor support makes Map360 both productive and scalable to your agency's needs as they change and grow. You can leverage the data from a wide

range of sensors, including total stations, laser scanners, laser distance meters, GNSS, unmanned aircraft systems (UAS/UAVs), mobile scanning solutions and more.



Map360

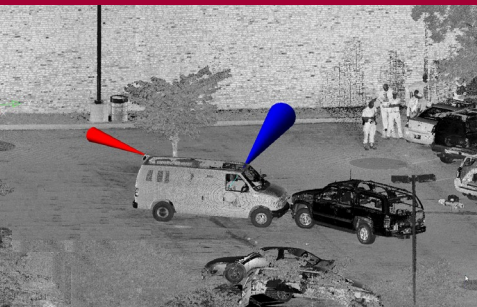
Turning data into compelling deliverables is also easy with Map360. Quickly create simple scene diagrams using sketch mode, or switch to advanced mode to access more tools.

The only forensic mapping software that has an industry-leading 3D CAD system built in, Map360 gives you a solid foundation to ensure your work is accurate, compelling, and irrefutable.

Use interactive templates to easily visualize your finished diagrams before printing.

Tap into the power of a full-featured animation module with rendering capabilities to easily build impressive animations that help you reconstruct the scene, analyze key events, and examine the data in new ways.

Take advantage of advanced camera support to watch your animation from many different views and see new perspectives.



Map360

Use built-in calculator tools to create crash reconstructions that include key variables, such as speed, deceleration factor, kinetic energy, momentum, kinematics and more. Work with confidence knowing your software incorporates the latest vehicle specification database. Take advantage of a powerful bullet path reconstruction tool that allows you to draw trajectory lines and error cones with a specified error tolerance and

customizable layer and color properties. And interface with industry-leading bloodstain analysis software, Hemospat, to perform analysis on your 3D point cloud.